

# Bocken 2016-2017



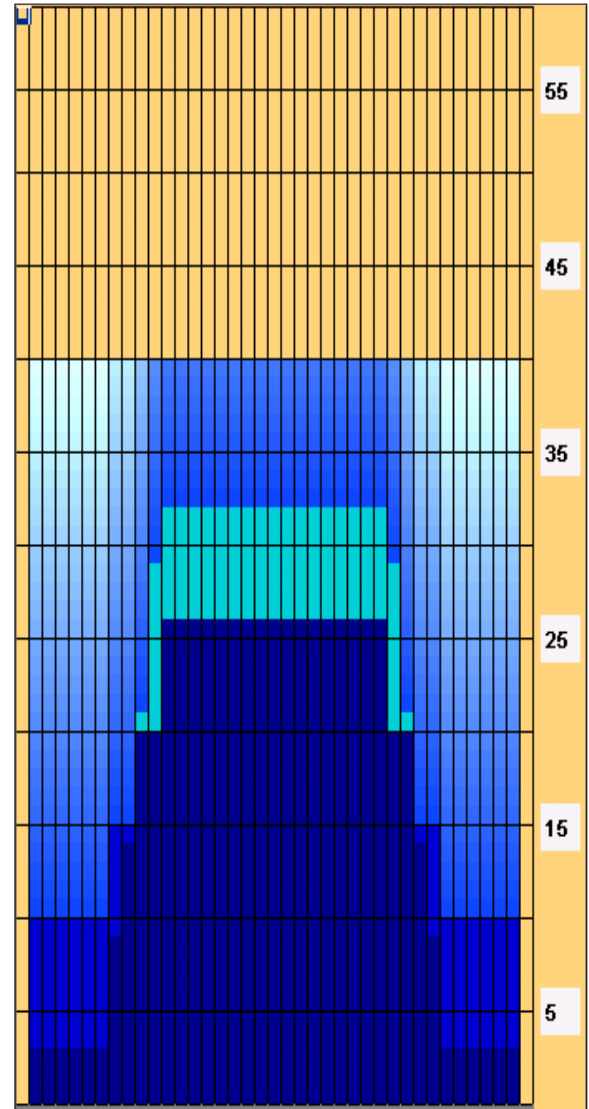
<b>Oil Pattern Distance:</b>	<b>40 Feet</b>	<b>Reverse Brush Drop:</b>	<b>30 Feet</b>	<b>Oil Per Board:</b>	<b>50 uL</b>
<b>Forward Oil Total:</b>	<b>17.2 mL</b>	<b>Reverse Oil Total:</b>	<b>8.15 mL</b>	<b>Volume Oil Total:</b>	<b>25.35 mL</b>
<b>Forward Boards Crossed:</b>	<b>344 Boards</b>	<b>Reverse Boards Crossed:</b>	<b>163 Boards</b>	<b>Total Boards Crossed:</b>	<b>507 Boards</b>

	Start	Stop	Loads	Speed	Crossed	Start	End	Feet	T.Oil
1	2L	2R	3	14	111	0.0	3.9	3.9	5550
2	8L	8R	2	18	50	3.9	9.0	5.1	2500
3	9L	9R	2	18	46	9.0	14.1	5.1	2300
4	10L	10R	3	18	63	14.1	21.7	7.6	3150
5	11L	11R	3	18	57	21.7	29.3	7.6	2850
6	12L	12R	1	22	17	29.3	32.4	3.1	850
7	2L	2R	0	30	0	32.4	40.0	7.6	0

Conditioner:  
Type In or Select One

TransferType:  
Type In or Select One

- Forward
- Reverse
- Combined
- Buff



Forward Reverse More

	Start	Stop	Loads	Speed	Crossed	Start	End	Feet	T.Oil
1	2L	2R	0	30	0	40.0	26.0	-14.0	0
2	12L	12R	2	22	34	26.0	19.8	-6.2	1700
3	10L	10R	2	18	42	19.8	14.7	-5.1	2100
4	8L	8R	2	18	50	14.7	9.6	-5.1	2500
5	2L	2R	1	14	37	9.6	7.7	-1.9	1850
6	2L	2R	0	10	0	7.7	0.0	-7.7	0

Forward Reverse More

Item	3L-7L:18L-18R	8L-12L:18L-18R	13L-17L:18L-18R	18L-18R:17R-13R	18L-18R:12R-8R	18L-18R:7R-3R
Description	Outside Track:Middle	Middle Track:Middle	Inside Track:Middle	Middle: Inside Track	Middle:Middle Track	Middle:Outside Track
Track Zone Ratio	5.25	1.46	1	1	1.46	5.25

